



CHECKOFF CHRONICLE

Farmers are Stewards of Michigan's Land

A Quarterly Periodical Publication

Issue 2

Spring 2007

MSPC Directors

JAMES DOMAGALSKI
President
Columbus, **District 4**
586.727.9639

ANDY WELDEN
Vice President
Jonesville, **District 2**
517.849.2582

MARK BIERLEIN
Treasurer
Reese, **District 5**
989.868.3534

BENJAMIN CHAFFIN
Secretary
Ithaca, **District 7**
989.463.4081

HERB MILLER
Niles, **District 1**
269.683.7888

JASON WOODS
Deerfield, **District 3**
517.447.3217

GEORGE ZMITKO
Owosso, **District 6**
989.723.1886

MSPC Staff
EXECUTIVE DIRECTOR
Gail Frahm

FIELD OPERATIONS DIRECTOR
Keith Reinholt

FINANCIAL DIRECTOR
Kathy Maurer

ADMINISTRATIVE ASSISTANT
Noelle Byerley

Office Contact Information:
Michigan Soybean
Promotion Committee
PO Box 287
Frankenmuth, MI 48734
989.652.3294
www.michigansoybean.org
soyinfo@michigansoybean.org

SOYBEAN INDUSTRY HONORS LONGTIME LEADER

On Friday evening, March 2nd, longtime Michigan soybean industry leader, Keith Reinholt accepted the **2007 ASA Special Meritorious Award** during a special program at Commodity Classic in Tampa, Florida. This award was presented by the American Soybean Association (ASA). Keith's nomination for this award was supported by the Michigan Soybean Association, Michigan Soybean Promotion Committee and numerous others throughout state and national organizations and associates whom he has been involved with over the years.

Keith's credentials include:

- Bachelor of Science Degree in Agronomy from Michigan State University
- Assistant Director of DeKalb's corn research farm in Mason, Michigan
- 17 years with DeKalb in positions of research and sales
- Headed the "Michiana" soybean office
- First fulltime employee of the Michigan Soybean Association (MSA) and Michigan Soybean Promotion Committee (MSPC) as their Executive Director in 1985
- Current Field Operations Director, coordinating agronomic and new use research for the MSPC and is their main producer communication person

"I've had a very enjoyable twenty-two years working for Michigan's soybean industry," said Reinholt. "It's exciting to have been a part of a growth industry with soybean production in Michigan nearly doubling in that timeframe and our activities have definitely expanded and diversified!"

When asked why he has been so involved with this industry for so long, Reinholt replied, "I did it all for the farmers. I believe in the efforts we undertake and in the soybean farmer directors that guide the direction of the industry."



Richard Ostlie, ASA President presents award to Keith Reinholt

Reinholt received over 30 letters in support of his nomination from the ag industry nationwide! "With support letters flowing in from all over the nation, one certainly knows that what Keith has done for the soybean industry has had a positive ripple effect throughout the ag community and related industries," said Gail Frahm, MSPC/MSA Executive Director. "His efforts through the years have benefited countless people both within and beyond agriculture. From soybean producers to livestock producers, state and national parks and the Department of Ag, Keith will be respected for a long time to come!"



MEET THE DIRECTORS

In a continuing effort to introduce your seven fellow soybean farmer Governor appointed Checkoff directors to you, this issue features George Zmitko.

I'm George Zmitko, a soybean producer from Owosso, Michigan in Shiawassee County. I have served on the soybean checkoff board since 2005 representing District 6 which includes Clinton, Genesee, Ionia, Lapeer, and Shiawassee counties.



I farm 8,000 acres as a third generation farmer with my son as the fourth. We raise corn, oats, soy, wheat, and barley. We also raise seed for soy, wheat, barley, and June clover. We have

brood cows and finished cattle.

I also serve the FSA Office, the Township Board of Appeals, and am Chairman for the Land Preservation Committee.

Serving on the MSPC board has been a good learning experience and I am looking forward to learning more. It's a good thing.

Successful Farming,
George Zmitko
MSPC Board Member

AG EXPO IS GOING HOG WILD

This year Ag Expo is going to the animals, an animal initiative that is. Our largest customer base is animals with 95% of soybean meal going to animal feed. With the help of the Michigan Pork Producers we will be educating consumers and farmers on soybean meal.

We will also have information on biodiesel and the latest news regarding pest and disease management.

Ag Expo is July 17th - 19th on Michigan State University's campus at the corner of Farm Lane and Mt. Hope.

Stop by Tent A to sign up for a chance to win either a \$25 Soybean Meal Certificate, \$25 Biodiesel Bucks Certificate, or a soy prize bucket which includes a Tofu Teddy Bear.

REPORT INDICATES SOYOIL PRICES SUPPORT SOYBEAN PRICES

A report from Dr. Darrel Good at the University of Illinois indicates the cash price of soybeans is being supported by soybean oil prices which, most likely, is being supported by the global increase in Biodiesel production. When referencing the cash price of soyoil at central Illinois plants, the price is nearing 32 cents per pound, 28% higher than prices a year ago. This can be contrasted to soymeal at \$187 per ton in central Illinois which is only 5% above the price of a year earlier. Average county elevator spot cash bid for soybeans is 22.7 % higher than a year ago even though the basis is about 15 cents weaker.

Soybean oil prices continue to move higher even at record inventory levels. Soyoil stocks at plants at the end of March were estimated to be at a record level which are 23% larger than a year ago. The Census Bureau estimated 220 million pounds were used in the U.S. for biodiesel production. That represents 13% of the total domestic use and exports of soybean oil during the month of March.

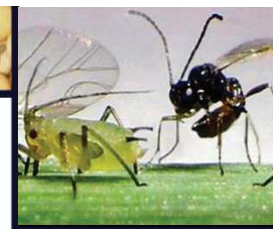
2007 SOYBEAN 2010 MEETINGS A SUCCESS

In the winter of 2007 and planned again for 2008 are a series of educational meetings designed to assist soybean growers overcome any barriers to attaining higher soybean yields and profitability.

In 2007, over 360 Michigan soybean producers and agribusiness agronomist participated in these educational meetings. A winter evaluation was distributed for participants to measure the educational impact. Survey analysis indicates:

- 94% learned new information.
- 85% plan to implement some of the learned information.
- 74% anticipated saving/earning money based on the new information.
- 25,500 (approximate) is acreage on-which participants plan to implement.
- \$13.65 additional amount per acre expected to earn/save.
- \$347,615 is the expected total financial impact "estimated" by the programs attendees.





PLANTING CHECKLIST FOR IMPROVING SOYBEAN YIELDS

Portions of this info from
Dr. Palle Pederson, Asst. Professor
Iowa State University

Soybean 2010 has a goal of improving soybean grower yield and profitability with a positive trend history by the year 2010. One aspect being addressed in communication pieces is the importance of early planting. Accompanying this effort are soil conditions, variety selection that do well in cooler and wet soils which will make the plant more vulnerable to diseases like SCN, seedling diseases, phytophthora, and brown stem rot; however, these should not hold us back as they can be managed.

Since the soybean is a source limited plant, the early planting will help ensure the plant captures as much solar radiation as possible. This relates to the close relationship between abundant canopy to capture sunlight and soybean yield. By capturing maximum sunlight with an early start we may be able to minimize flower abortion. Early photosynthesis leaf area favors less flower abortion.

Dr. Pederson's research shows the importance of the early-on addition of vegetative nodes. On average, we will get a new node for every 4-5 days so planting the last week of April or early May may give us three more nodes. Telling the difference of added nodes from early planting may be difficult to detect unless you go into your fields in late June and count nodes as most varieties will attain the same visual height.

Most are aware of the yield limiting effects of weeds. Depending on the conditions, a one-pass weed control program may not be possible for

maximum yields. Bottom line is: If you want high yielding soybeans, you cannot afford weed competition. For more timely weed control information visit the Soybean 2010 web site at <http://web1msue.msu.edu/soybean2010/>.

Glyphosate Resistant Horseweed Identified in Michigan

Glyphosate resistant weeds are not new to the U.S. It is reported, there are seven different glyphosate weed species. The first report of resistance was on a horseweed in Delaware in 2000. Since this first discovery, glyphosate resistant horseweed has been confirmed in 15 states with Michigan now being added as number 16! Now that we have confirmed resistance, steps should be taken to reduce the spread of glyphosate resistant horseweed. Consult your local County MSUE office for details.

Since a reported 75-80% of Michigan soybeans are glyphosate resistant, this has been identified as a key soybean management need even though the resistant horseweed was identified in a Christmas tree plantation in Mason County. If you suspect this resistant variant in your soybean crop, submit a mature seed-head to your County MSUE office and the cost of the analysis will be paid for by the Soybean Checkoff.

GO PAPERLESS

If you would like to receive your copy of *Checkoff Chronicle* by e-mail please send your request to soyinfo@michigansoybean.org.

Picture to the right:
Parasitoid stinging an aphid.

SOYBEAN APHID NEWS

Effect of Cold Weather on SBA

Chris DiFonzo, MSU Entomologist, reports an indication of massive winter kill associated with the sub-freezing April temperatures (after the SBA emerged in late March from Buckthorn buds). When compared to the number of eggs seen on Buckthorn in the fall of 2006; however, the SBA's that did survive will most likely be active and looking for soybeans on which to feed in mid June. Be aware, not alarmed!

Biological Control of the SBA

In Asia SBA control is mainly by wasp parasitoids. In 2001, exploration of similar climate-matched areas of Asia to our

Midwest was researched to find wasp colonies specific to the SBA. With wasp colonies now in quarantine in the U.S., specialists are testing each



Parasitoid emerging from its host's dead body, a 'mummy'

species for efficacy, host range, survivability, etc. Since the U.S. and Canadian governments recently granted permission for the release of one species, Michigan will become part of the release program under the direction of Dr. DiFonzo. Release sites will be used which are simply a part of a field that is not sprayed. A 1m X 1m cage will be infected with SBA which is then infected with the wasp parasitoid. These same areas will then be resampled in 2008.



Non-Profit Org.
U.S. Postage
PAID
Permit No. 35
Ithaca, MI

IN THIS ISSUE

Spring 2007

- Keith Reinholt Honored as Longtime Leader
- 2010 Meeting Success
- Aphid News
- Soybean Hotline



Soybean Hotline

SOYBEAN HOTLINE

TOLL-FREE AT 888.201.9301

During the busy spring planting season and continuing throughout the summer months, soybean producers are away from their computers or offices. But thanks to a new service from Soybean 2010, soybean producers can use their cell phones to access crop and pest management information anytime, anywhere by calling a new toll-free soybean hotline, 888.201.9301. Program this number into your cell phone today.

Michigan State University (MSU) Extension specialists will record updated messages about insects, diseases, weeds, agronomic information, soybean cyst nematodes, and the Michigan Automated Weather Network. Callers can listen to multiple topics without redialing and can call as often as needed.

Messages will be updated as often as necessary to provide Michigan soybean growers with the most up-to-date information for improving soybean yields and profitability. Topics will be added and updated under the main subject areas

from May through August.

"We won't be recording new information once a week if a situation is changing on a daily basis," says Mike Staton, MSU Extension educator and Soybean 2010 coordinator. "We already expect that soybean aphids may reach damaging populations levels this season, so we plan to update the insect information on the hotline frequently from late June through mid- August with the latest scouting reports and control recommendations."

The information will be specific to Michigan conditions but will include region-specific recommendations when warranted. For more information about improving Michigan's soybean crop, visit the Soybean 2010 web page at <http://web1msue.msu.edu/soybean2010/>. Soybean 2010 was developed to help Michigan growers increase soybean yields and farm profitability by 2010. Funding is provided by MSU Extension, Project GREEN (Generating Research and Extension to meet Economic and Environmental Needs), the Plant Industry Initiative at MSU, and the **Michigan Soybean Promotion Committee**.



If you are receiving duplicates of this mailing, please contact our office via mail and include the copies of the multiple addresses with a note of the correct address to the MSPC, PO Box 287, Frankenmuth, MI 48734 or FAX details to 989.652.3296.